



Stoneacre
Properties



Hollyshaw Lane, Leeds, LS15 7AF
£1,500 Per Calendar Month

Stoneacre Properties are delighted to be able to offer to let a well presented semi detached family sized house which can be found in this most popular and sought after location close to all amenities at both Crossgates and Whitkirk as well as being close to the wide open spaces of Temple Newsam. The property boasts spacious and well appointed rooms and features an inviting entrance hall, a lounge, dining room, a fitted kitchen at the ground floor level. On the first floor there is four bedrooms and a modern bathroom. There is also a rear garden and a garage with off street parking. Early internal viewings are strongly advised so as to avoid disappointment. Available 26th Jan 2026. Unfurnished.

GROUND FLOOR

ENTRANCE HALL

LOUNGE

DINING ROOM

KITCHEN/BREAKFAST ROOM

FIRST FLOOR

BEDROOM ONE

BEDROOM TWO

BEDROOM THREE

BEDROOM FOUR

BATHROOM

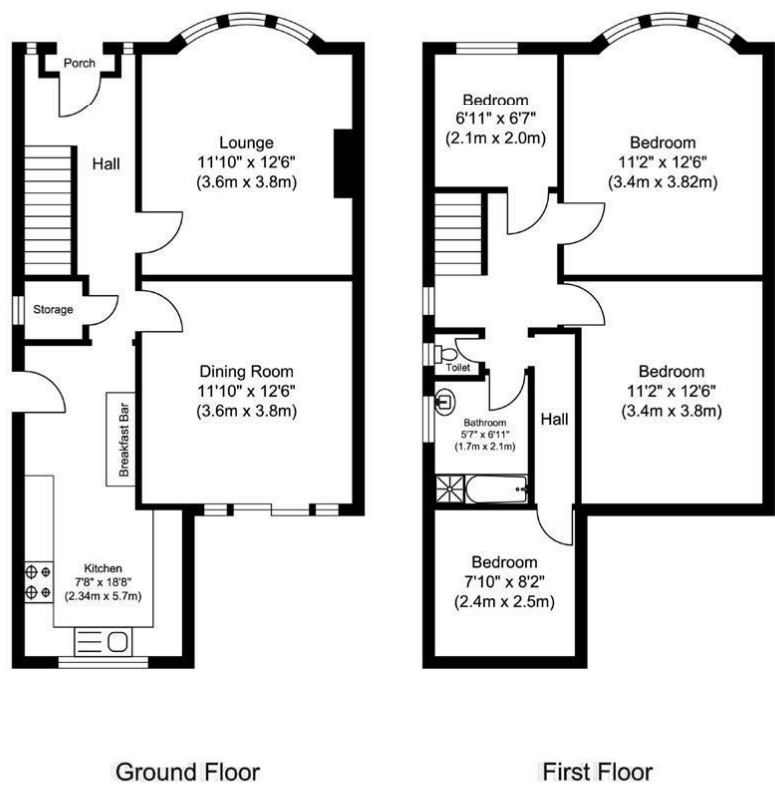
OUTSIDE

GARDEN

Rear garden laid mainly to lawn.

GARAGE

Floor Plan



Ground Floor

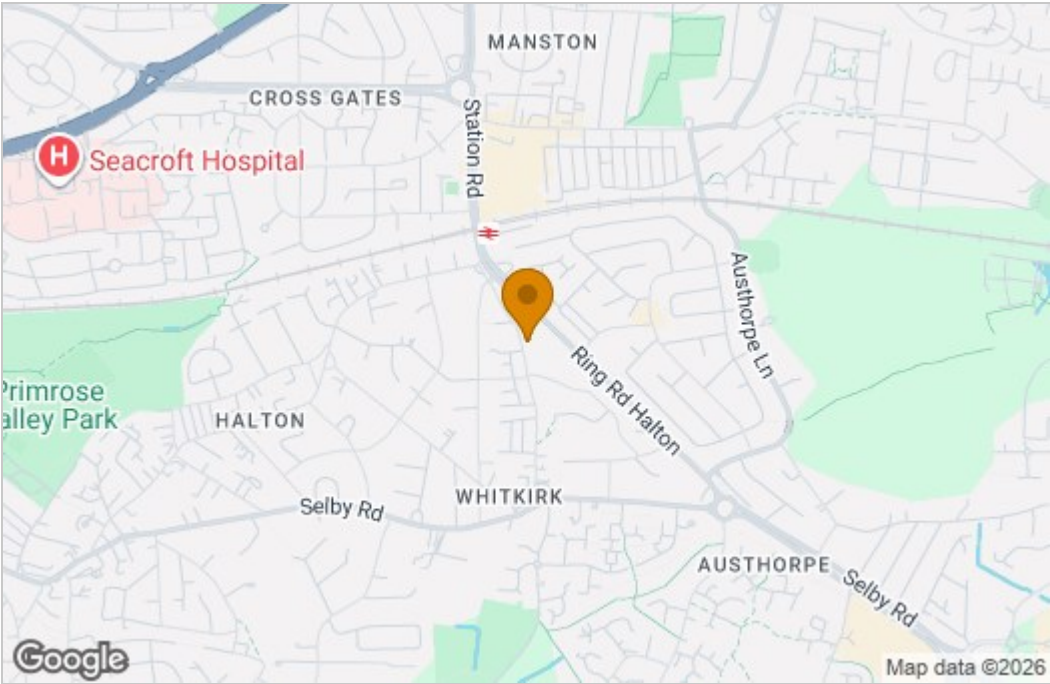
First Floor

Hollyshaw Lane, Leeds, LS15 7AF

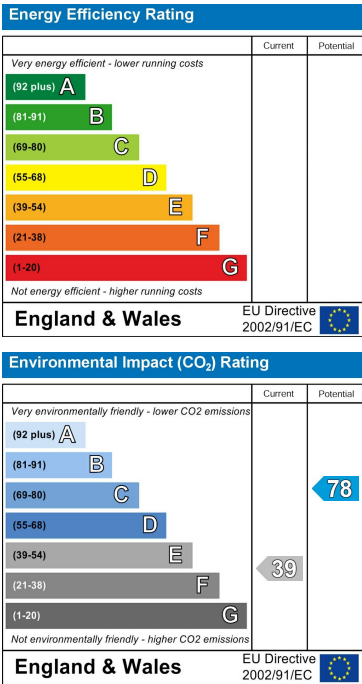
Approx gross internal Floor area 101.16 sq. m (1088.87 sq. ft.)

Whilst every attempt has been made to ensure the accuracy of the floor plan contained here, measurements of doors, windows, rooms and any other items are approximate and no responsibility is taken for any error, omissions or misstatement. This plan is for illustrative purposes only and should be used as such by any prospective purchaser

Area Map



Energy Efficiency Graph



These particulars, whilst believed to be accurate are set out as a general outline only for guidance and do not constitute any part of an offer or contract. Intending purchasers should not rely on them as statements of representation of fact, but must satisfy themselves by inspection or otherwise as to their accuracy. No person in this firm's employment has the authority to make or give any representation or warranty in respect of the property.

